

Safety Radar



Safety Radar is very effective device for speed reduction nearby cities, dangerous points, motorway ramps, one-way street etc.

Flashing lights system with doppler radar which detects the car and the speed and sends a signal to the lights if the limit has been exceeded.

Available with LED message panel..

Signage panel not provided.



Radar LC/LCL






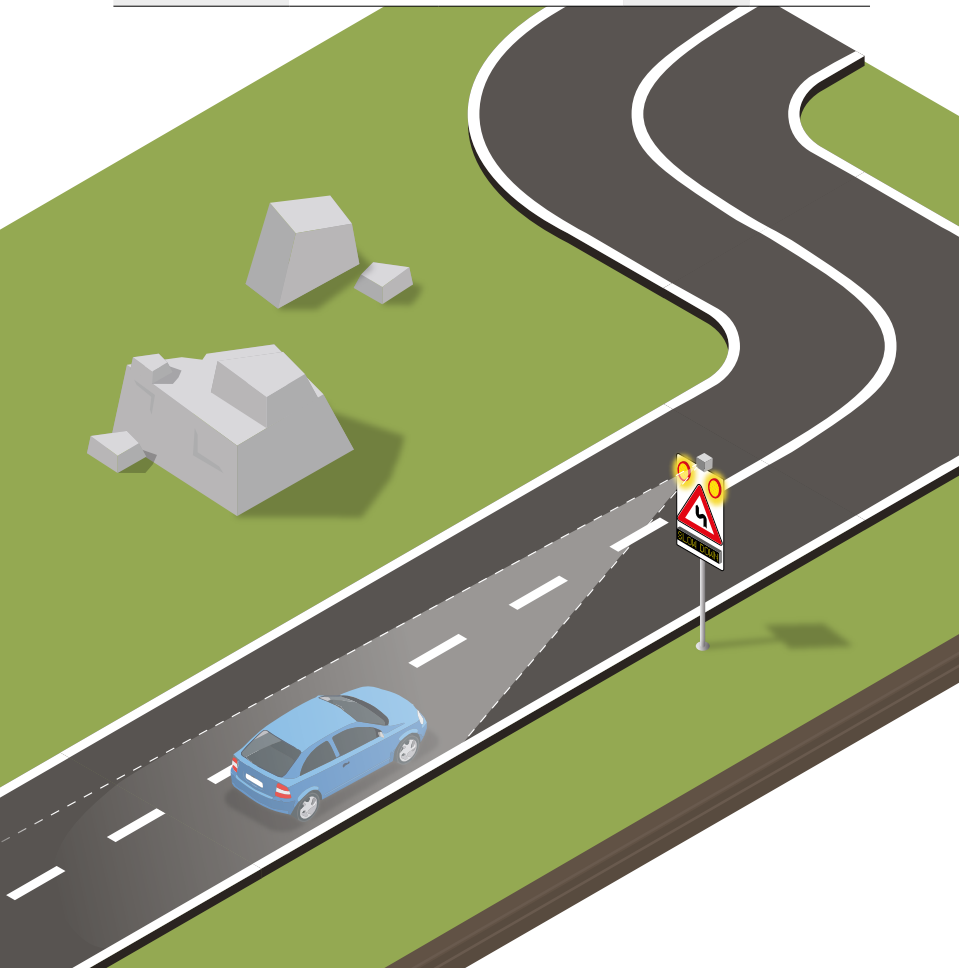
Radar FALCON BASIC



BASIC 201



Certification	Basic 201	EN12352 L8H	
LED colour	●		
Powered by	 Power supply kit	 Power supply/ Battery kit	 50 W 100 W con display Photovoltaic kit
Radar range	Radar LC: 100 m	Radar LCL: 200 m	
Display dimensions	850 x 190 x70 mm	Typeface height 100 mm	



Examples of application:
Safety Radar